

VENTÜER TECHNICAL DATA SHEET

Circular Ceiling Diffusers



Cone Diffusers:

- Adjustable diffuser suitable for ceiling mounted heating, cooling or ventilation options.
- White ABS plastic construction with etched finished to visible surfaces reducing light reflectivity.
- Airflow hugs the outer body and spreads in a concentric pattern along the ceiling.



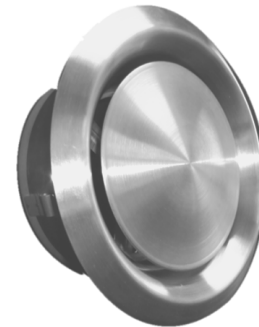
Eggcrate Diffusers:

- Durable ABS plastic eggcrate grille with adjustable butterfly damper.
- Quiet and efficient airflow, with very low pressure drop.
- Suitable for return or exhaust applications, or supply applications where a strong narrow jet of air is required.



Downjet Diffusers:

- Downjet diffusers disperse air over a greater area than other diffusers thanks to the circular blades which are set at varying angles.
- Suitable for ventilation or heating applications where warm air is required to mix at lower levels.
- Constructed from white ABS plastic with etched surface finish.



Stainless Steel Cone Diffusers:

- Adjustable diffuser suitable for ceiling mounted heating, cooling or ventilation options.
- Stainless steel construction.
- Easy mounting with fixing lugs or screws.

Technical Specification								
Product	Material	Colour	Code	Dimensions (mm)				
				Duct Size	Face Diameter	Spigot Diameter	Spigot Length	Cutout Size
Cone Diffuser	ABS Plastic	White	CDC-300	300	435	300	102	405
			CDC-250	250	389	250	102	355
			CDC-200	200	317	200	95	282
			CDC-150	150	266	150	95	232
Eggcrate Diffuser	ABS Plastic	White	EDC-200	200	290	200	95	260
			EDC-150	150	240	150	95	215
Downjet Diffuser	ABS Plastic	White	DDC-250	250	268	195	70	250
			DDC-150	150	220	145	70	200
Stainless Steel	Stainless Steel 304	Stainless	SDC-150	150	220	145	62	150
			SCD-125	125	172	120	52	130
			SCD-100	100	140	97	52	105

**CEILING
DIFFUSERS**

DC-SERIES



VENTÜER
High-Performance Building Ventilation
P: +64 9 973 3616
W: www.ventuer.co.nz
© 2019 All rights reserved

Scale: NTS
Date: 08/10/2019

IG-DC

Ver.1