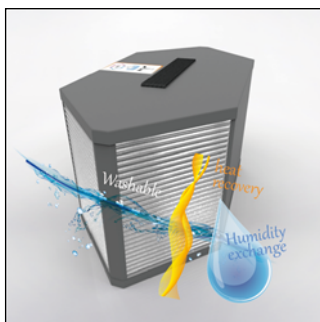


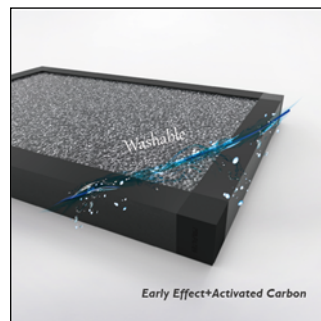
VENTÜER TECHNICAL DATA SHEET

The Ventüer PHE series of air-to-air heat exchangers are highly efficient energy recovery devices. With options that range from 150m³/h of air flow up to 8500m³/h, these units are designed to provide pre-heating or pre-cooling in mechanical ventilation systems using the otherwise wasted energy contained within the exhaust air stream. Complete with EC fan options, washable cores, electrostatic / HEPA / activated carbon filters and a range of different control types, these heat exchangers are ideal for use in houses, apartments and offices.



All PHE series units come with a washable composite fibre filter sprayed with activated carbon. This can be used as a pre-filter for electrostatic or HEPA filters or on its own for situations with low air contamination.

Constructed in a highly efficient cross flow configuration, the cores provide maximum heat transfer and can be easily removed and washed under running water when required.



Optional electrostatic filters offer increased air purification. Designed to remove up to 98% of PM2.5, they can be used in conjunction with other filter types to provide increased filtration.

For ultimate filtration H13 HEPA filters can be included. These high efficiency pleated filters take the PM2.5 removal rate to as high as 99.97%



Console Heat Exchangers



VENTÜER
High-Performance Building Ventilation

P: +64 9 973 3616
W: ventuer.co.nz
© 2019 All rights reserved

Scale:
Date:

NTS
25/10/2019

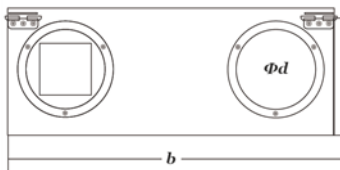
PHE

Ver.1

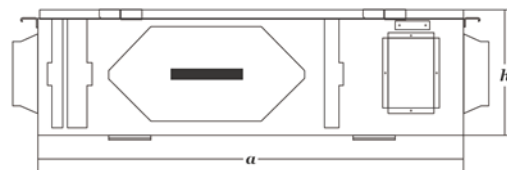
VENTÜER TECHNICAL DATA SHEET

Technical Specifications

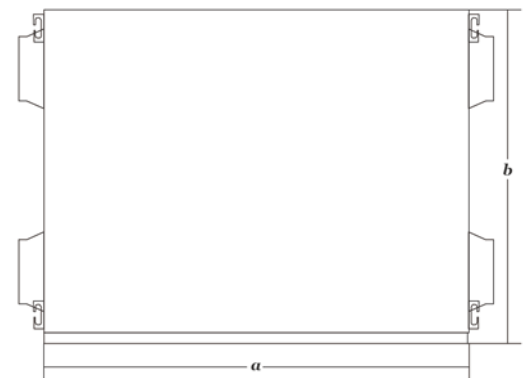
Model	Voltage (V)	Power (W)	Volume (m ³ /h)	Pressure (Pa)	Efficiency (%)	Noise (dBA)	Length (mm)	Width (mm)	Height (mm)	Outlet Diameter (mm)	Weight (kg)
PHE-150	220	73	150	115	88% - 96%	26	780	814	186	120	19.5
PHE-250	220	82	250	132	87% - 95%	28	866	643	228	150	26.5
PHE-350	220	96	350	140	86% - 94%	29	880	688	260	150	31.5
PHE-500	220	128	500	160	86% - 94%	30	1110	845	260	200	45
PHE-800	220	188	800	160	86% - 91%	36	1143	809	342	200	52
PHE-1000	220	266	1000	170	86% - 91%	36	1143	809	342	200	52
PHE-1300	220	272	1300	170	87% - 91%	38	1143	809	342	200	53
PHE-1500	220	298	1500	175	85% - 88%	44	1143	809	342	200	53.5
PHE-1700	220	315	1700	180	86% - 88%	46	1280	904	350	250	63
PHE-2000	220	335	2000	205	85% - 90%	48	1280	904	350	250	63
PHE-2200	220	352	2200	210	85% - 90%	49	1280	904	350	250	65
PHE-2500	220	420	2500	260	85% - 89%	51	1280	904	350	250	65
PHE-3000	220	510	3000	260	87% - 91%	52	1200	904	381	250	69.5
PHE-3500	220	580	3500	265	86% - 91%	55	1200	904	381	250	69.5
PHE-4000	220	710	4000	280	86% - 92%	57	1200	1160	476	285x254	71
PHE-4500	220	820	4500	285	86% - 91%	61	1200	1160	476	285x254	71
PHE-5000	220	920	5000	320	86% - 90%	64	1300	1160	476	295x260	104
PHE-5500	220	1020	5500	320	86% - 91%	64	1300	1160	476	295x260	104
PHE-6000	220	1280	6000	330	85% - 91%	65	1320	1160	550	328x289	116
PHE-7000	220	2550	7000	350	85% - 91%	65	1320	1160	550	328x289	116
PHE-7500	220	3460	7500	350	84% - 90%	65	1320	1160	550	328x289	118
PHE-8000	220	3880	8000	360	83% - 91%	66	1320	1160	550	328x289	118
PHE-8500	220	4420	8500	365	83% - 90%	66	1320	1160	550	328x289	118



left view



front view



top view

Console Heat Exchangers



VENTÜER
High-Performance Building Ventilation

P: +64 9 973 3616
W: ventuer.co.nz
© 2019 All rights reserved

Scale:
Date:

NTS
25/10/2019

PHE

Ver.1