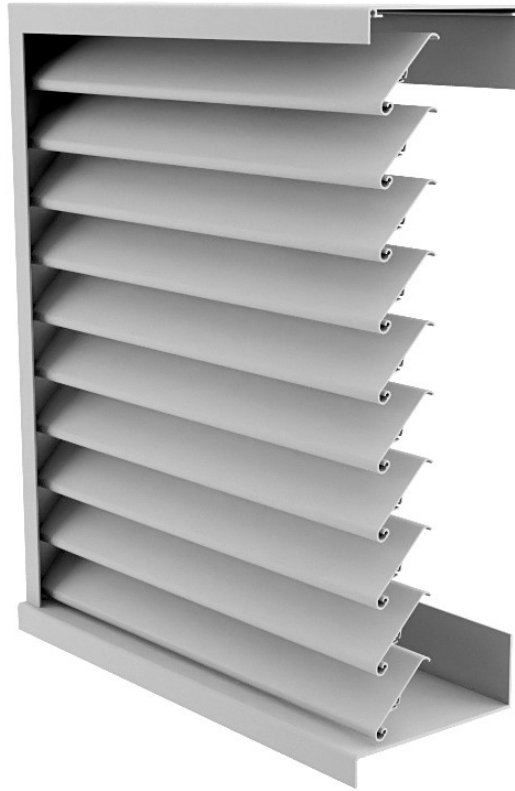


# VENTÜER TECHNICAL DATA SHEET



## Deflections / Spans for VL-50CM

Wind Zone	Self Weight	Low	Medium	High	Very High	Extra High
m/s	0	32m/s	37m/s	44m/s	50m/s	55m/s
kPa		0.88 kPa	1.18 kPa	1.68 kPa	2.17 kPa	2.63 kPa
Service load kn/m	0.004	0.033	0.047	0.074	0.099	0.119
Span m	Numbers in cells are deflections in mm					
0.5	0.03	0.23	0.33	0.53	0.70	0.84
0.6	0.06	0.49	0.70	1.10	1.46	1.76
0.7	0.12	0.92	1.30	2.04	2.71	3.26
0.8	0.20	1.56	2.22	3.49	4.62	5.56
0.9	0.33	2.51	3.56	5.59	7.41	8.91
1	0.50	3.83	5.43	8.52	11.30	13.59
1.1	0.73	5.61	7.95	12.48	16.54	19.90
1.2	1.04	7.94	11.27	17.68	23.43	28.18
1.3	1.43	10.94	15.52	24.36	32.28	38.82
<b>KEY:</b>	<b>Light Grey shading = Acceptable span</b>		<b>Dark Grey shading = Over recommended span</b>		<b>Black Shading = Unsafe</b>	
*Over Recommended Max Span' is the point at which Ventüer considers the deflection as 'unsightly'						
*Deflection values assume simple support and do not take into account the integrity of any fixing.						
*Deflection values assume a vertical louvre (not tilted).						

**VL-50CM  
DEFLECTIONS & SPANS**



**VENTÜER**  
High-Performance Building Ventilation  
P: +64 9 973 3616  
W: ventuer.co.nz  
© 2019 All rights reserved

Scale:  
Date:

NTS  
25/10/2019

VL-50CM\_DDS

**Ver.1**